

IX pricing comparison

Bandwidth	MIX-IT	AMS-IX	LINX	DECIX
10	€ 1810	€ 6000	€ 3917	€ 4900
50	€ 3250			
100	€ 4450		€ 3917	
200	€ 6850			€ 4900
1000	€ 9250	€ 6000	€ 7092	€ 8500
2000	€ 18850			
2500				€ 16900
10000	€ 28450	€ 24000	€ 21827	€ 30100

Second port on the backup LAN:

FE	€ 2400		€ 0	
GE	€ 7800		€ 6323	
TE	€ 17400		€ 18899	

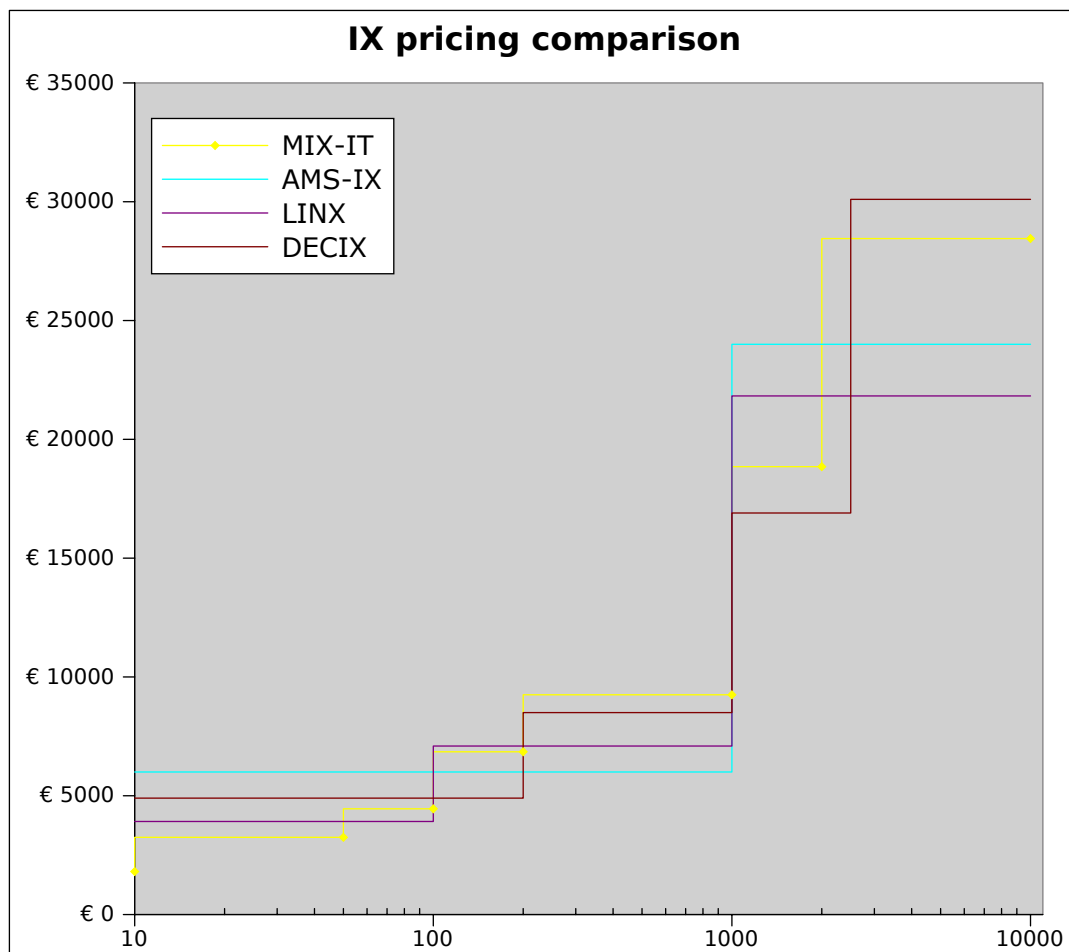
Notes:

The yearly recurring fees are already computed as part of the yearly ports costs.

Installation charges for LINX ports and cross-connect costs have not been considered.

The DECIX yearly fee is actually the "eco association membership" fee.

At MIX-IT, ports for LAGs are charged at the "backup port" rate.



Italian Exchanges

Bandwidth	NAMEX	TOP-IX	MIX-IT
10	€ 2500	€ 4500	€ 1810
20		€ 6000	
50	€ 2500		€ 3250
100	€ 5000	€ 8000	€ 4450
200		€ 11000	€ 6850
300		€ 13000	
310			
400			
500	€ 11000		
620			
1000	€ 12000	€ 16000	€ 9250
2000		€ 23000	€ 18850
3000		€ 27667	
4000			
5000	€ 20000		
10000	€ 28000	€ 31000	€ 28450

Extra ports for backup or LAGs:

FE	€ 0	N/A	€ 1800
GE	€ 0	N/A	€ 7200
TE	€ 0	N/A	€ 22524

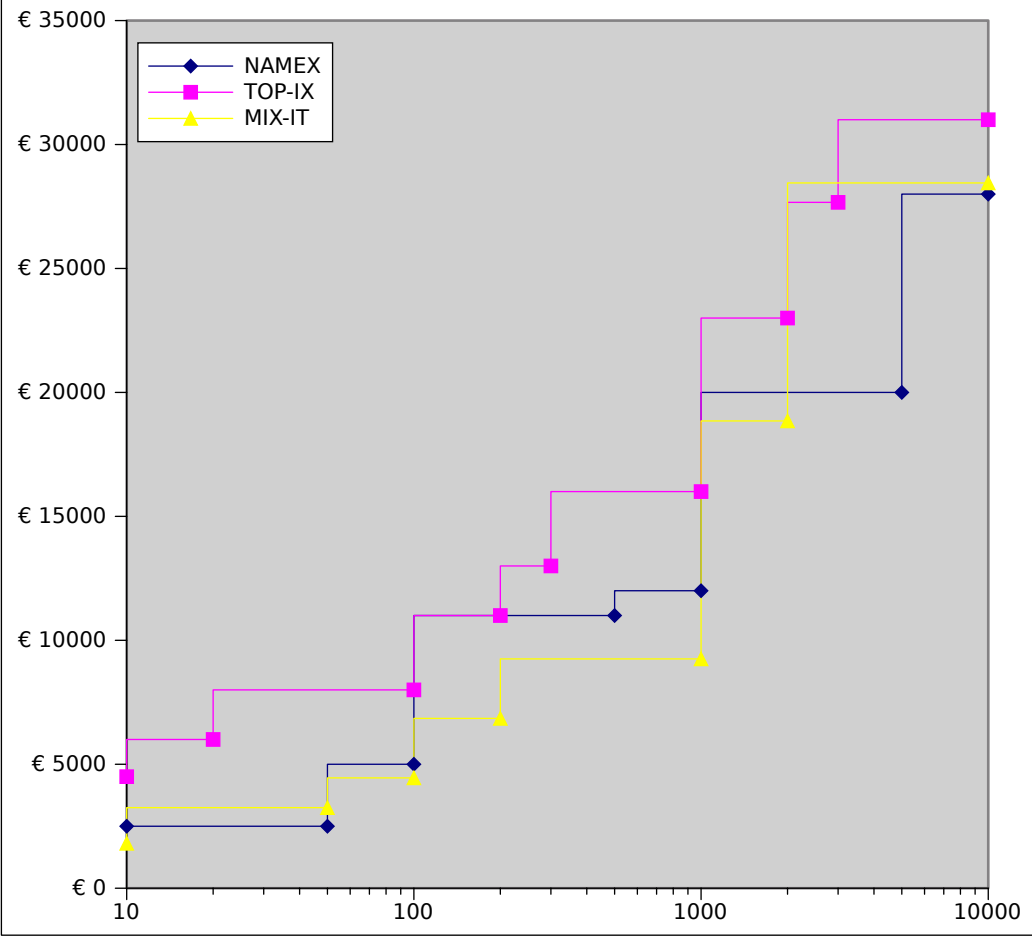
Notes:

TOP-IX membership requires a non-recurring joining fee of at least 5000€.

TOP-IX lacks a backup infrastructure, but can provide backup port(s) on the same infrastructure at 50% discount.

MIX-IT members can save some money by ordering a two-ports LAG instead of a fractional port.

Italian Exchanges



Historical pricing of MIX-IT

Bandwidth	MIX-IT (2006)	MIX-IT (2007)	MIX-IT (2009)	MIX-IT (2010)
4	€ 2250	€ 1850	€ 1250	
6		€ 2350	€ 1450	
8	€ 3650	€ 2850	€ 1650	
10		€ 3350	€ 1850	€ 1810
12	€ 5050	€ 3850	€ 2050	
14		€ 4350	€ 2250	
16	€ 6450	€ 4850	€ 2450	
20		€ 5130	€ 2850	
25		€ 5480	€ 3350	
30		€ 5830	€ 3850	
34	€ 7890	€ 6110	€ 4080	
40		€ 6530	€ 4350	
45		€ 6880	€ 4575	
50		€ 7230	€ 4800	€ 3250
55		€ 7580	€ 5025	
60		€ 7930	€ 5250	
68	€ 10610	€ 8490	€ 5610	
80		€ 9330	€ 6150	
90		€ 10030	€ 6600	
100	€ 13170	€ 10730	€ 7050	€ 4450
120		€ 12130	€ 7130	
140		€ 13530	€ 7310	
155	€ 17570	€ 14580	€ 7445	
200		€ 14895	€ 7850	€ 6850
310	€ 19430	€ 15665	€ 8840	
400		€ 16295	€ 9650	
620	€ 23150	€ 17835	€ 11630	
1000	€ 27710	€ 20495	€ 15050	€ 9250
2000	€ 28310	€ 27495	€ 24050	€ 18850
3000		€ 28295	€ 28250	
4000		€ 29095	€ 29050	
5000	€ 30110	€ 29895	€ 29850	
10000	€ 33110	€ 33895	€ 33850	€ 28450

Extra ports (for backups or LAGs):

FE	€ 2004	€ 2004	€ 1800	€ 2400
GE	€ 8004	€ 8004	€ 7200	€ 7800
TE	€ 25020	€ 25020	€ 22524	€ 17400

